

## Step 1 Download and install the APP



TuyaSmart



Smart Life

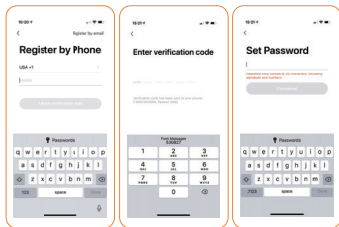


Scan the QR code above or search "Tuya Smart" in application market to download and install the App.

## Step 2 Sign in App

1. Sign in with mobile phone number + verification code. Select your code, enter the phone number and tap "Get" to get a message containing verification code. Enter the verification code in the message and tap "Login" to login the App.

2. Sign in with social media account.



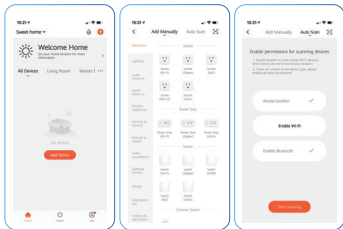
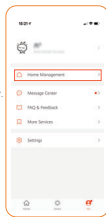
## Step 3 Create families

Add a family name and location. Select rooms where smart bulbs will be located when finished press done.

## Step 4 Add a device

### Simple 5-Steps to add smart devices

- (1) Plug in and ensure the device switch on.
- (2) Open the Smart Life App or tuya smart App and click "Add device" or the "+" in the top right corner.
- (3) Select your smart product from the list of devices or use Auto scan to find your device.
- (4) Reset the device to enter networking state.
- (5) Select your Wi-Fi network and enter the Wi-Fi network password and select "OK".



### How to pair devices

Turn on-off-on-off-on until the light is rapidly blinking.  
Switch time interval shall not exceed 10 seconds.



### Note:

1. Connect light bulbs only via WiFi for the first time, please make sure that the light is quickly flashing and WiFi password you inputted is correct. (The connection process may take several minutes, please be patient.)
2. After the first connection, you can use a new WiFi or mobile data traffic to control lights anytime at anywhere.

## Step 5 Control your device

After the device is connected successfully, tap "Devices" at the bottom. The device name of the smart lamp shows in the list. Tap it to enter the control panel of the smart lamp.

1. **White Mode:** Adjust brightness and color temperature of white light.
  2. **Color mode:** Adjust color, brightness, saturation of colorful light.
  3. **Scene mode:** Eight scene modes (4 static & 4 dynamic)
    - "Night" (Orange light helps to sleep)
    - "Reading" (Bright white light helps to concentrate)
    - "Party" (Orange red light creates a vivacious atmosphere)
    - "Leisure" (Light blue light is relaxing)
- The 4 modes above are not adjustable
- "Soft" (Light changes from dim to bright)
  - "Rainbow" (6 colors rotate in sequence with flashing)
  - "Shine" (Disco light)
  - "Gorgeous" (6 colors rotate smoothly in sequence)

Colors, flashing frequency and brightness can be specified in the 4 modes above.

### 4. Timer Setting

5. **Create groups** If you got two or more lights please tap "+" at the upper right corner of the control panel and create groups. The smart lamp group will realize synchronous switch, color changes, the scene mode selection, timer, etc.

### Color Temperature

You can change the light bulb from a soft white to bright daylight white. Change your lighting from warm to cool white within seconds.

### Choose from over 16 million colors

Choose from any hue in the rainbow and change the color of your bulbs within seconds. Adjust the brightness and coolness to suit your mood.

## Set the Scene

Choose from a variety of scenes of your create your own. You can create a scene for movie night, a party scene with colorful light, or even a candlelit scene with warm, low lighting.

## Create Schedules

Set schedules based on your preferences and daily needs. Choose individual actions for each bulb, set the same schedule for more than one day schedule or a group of bulbs. Schedules are a great way to have your light works around your life.

## Music Sync

Choose Music Sync to match color changes to beat of music playing on your speakers.



Temperature

Choose a Color

Set a Scene

Music Sync

## Step 6 Voice Control Using the Smart Life App

Use the App to control your bulbs using your voice. Click on the microphone icon and use the following commands to control your bulb using your voice. Please see below examples of commands you can use after pressing the microphone icon ( replace bulb name with name of your bulb)

### Switch on / off

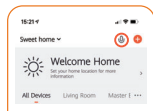
- "Turn on bulb name"
- "Turn of bulb name"

### Change Color

- "Change bulb name to blue"

### Change Brightness

- "Change bulb name brightness to 90%"



## Step 7 Google Home & Amazon Alexa Setup

### Voice Control Using Google Home

- (1) Tap "Home Control" in the hamburger menu on the Google Home App's home page, then tap "+"
- (2) Find "Smart Life" on the list. In the new window, select your smart life account's region, type your Smart life account and password, then tap "Link Now" After you assign rooms for devices, your devices will be listed in Home Control page.
- (3) Control your smart devices through Google Home. Now you can control your smart devices through Google Home. Take study room light as an example. The supported voice commands are as below.

## Control Using Amazon Alexa

Choose "Skills" in the options bar, and then search "Smart Life" in the input box. Select Smart life in the search results, and then click "Enable To Use." Then input the user name and password that you used previously to register.

## Control Smart Bulb by Voice

After the above operations is successful, you can control the bulb via Echo.

## Discover Devices

Say to Echo: "Echo (or Alexa), Discover my devices."  
Echo will start to find the devices which have been added in the smart life app. It will take about 20 seconds, and then it will tell you the result. You can also click "Discover devices" in Alexa App.

## Control Devices by Voice

You can control the bulbs by instructions like these :

- "Echo(or Alexa), turn on study room light
- Echo(or Alexa), turn off study room light
- Echo(or Alexa), set study room light to 70%
- Echo(or Alexa), increase study room light to 70%
- Echo(or Alexa), decrease study room light to 70%"

## Step 8 Profile

1.Device Sharing: Could type in a new member's mobile phone number and share the device with him. The new member can control the device with his own account. The list shows all members who are added by your account. You can delete the member and cancel the sharing by sliding to left.

2. Integration: Connect Amazon echo & Google home instruction manual. At present there're only 3 orders available in Amazon echo and Google home: Color changing, Brightness setting and switch on or off the light.

### Note:

- 1.One key sharing function enter the phone number and share immediately, the number to be shared is unlimited (The number must be a registered number of Tuya App)
- 2.After Sharing, new equipment and new setting will be shared to the receiver, but the lamp group won't be shared.
- 3.Third party registration accounts temporarily unable to connect Amazon Echo ,limited to mobile phone registered account.



## Step 9 Note

1. After you power off the light and power it back on, you have to connect the first WiFi to control the light.
- 2.Only supports WLAN in 2.4GHZ, Android 4.1 above and ios 8.0 above. Do not apply to 5G WIFI
3. When you connect multiple WiFi bulb, don't let the both bulb too close, it may cause signal interference.

 Bulgarian



 Serbian

